

全自动高速垫板式冲孔机 (Per)

最高冲孔速度:

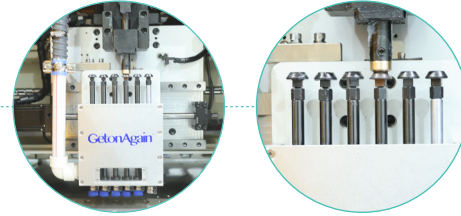
单头2000孔/分钟，双头4000孔/分钟。

Maximum Punching Speed:

**Single head 2000 holes/minute,
Double head 4000 holes/minute.**



Automatic High-Speed Leather Perforating Machine (Per)

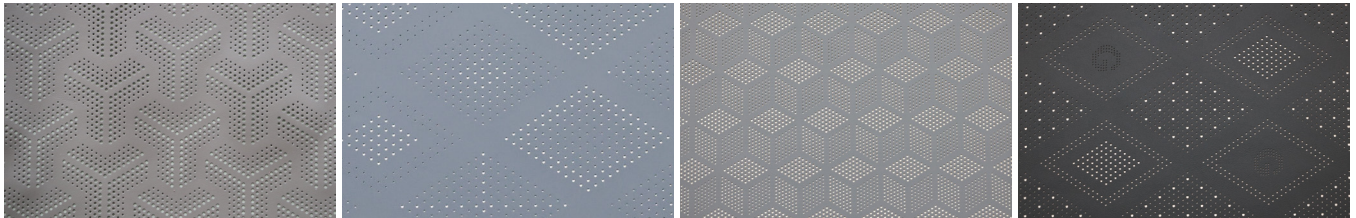


应用领域

适用于各种类型及厚度的真皮、超纤皮革的冲孔加工，广泛用于汽车座椅、航空座椅、家具皮饰、箱包、鞋类、服装等行业。

Application

Suitable for punching various types and thicknesses of genuine leather and microfiber leather, widely used in automotive seats, aviation seats, furniture upholstery, leather bags, shoes, and clothing industries.



性能特点

- 15寸触摸中控屏，界面友好，操作便捷。
- 全方位立体防护设计，能有效吸音降噪，同时保障操作安全。
- 关键冲孔部件表面强化，抗冲击、耐疲劳，适合高强度作业。
- 加高冲杆箱体设计，提高冲杆弹簧寿命，减少零件损耗。
- 配备自润滑系统，减少运动部件摩擦，降低故障率，延长设备寿命。
- 配备工业吸尘器，强力吸走皮屑，延长冲头使用寿命。
- 单头机效率最高可达2000孔/分钟，双头机效率最高可达4000孔/分钟。
- **选配:** 专业制版软件，再登高智能冲绣缝CAD系统。
- **选配:** 可搭载智能物联网系统，支持远程实时监控与云端数据管理，实现设备状态、生产参数的可视化；自动记录与分析生产数据，助力企业优化生产效率，打造数字化生产管控体系。

Features

- 15-inch touchscreen control panel for intuitive operation.
- Full-scale three-dimensional protection design, effectively absorbs sound and reduces noise while ensuring operational safety.
- Reinforced punching components for impact and fatigue resistance in high-intensity use.
- The punch toolbox is heightened to prolong the punch tools spring's service life and reduce part wear.
- A self-lubricating system is installed to reduce friction of moving parts, lowering failure rate and prolonging service life.
- An industrial dust collector is equipped to strongly suck away scrapings, extending punch tools life.
- Single-head machines can make up to 2,000 holes per minute, and double-head ones up to 4,000.
- **Optional:** Professional Pattern Making Software, GetonAgain SewPerEmb CAD .
- **Optional:** It can be equipped with a smart IIoT system for remote real-time monitoring and cloud data management, visualizing equipment and production data. It automatically records and analyzes production data to help optimize efficiency and build a digital production management system.

全自动高速垫板式冲孔机 (Per) Automatic High-Speed Leather Perforating Machine (Per)

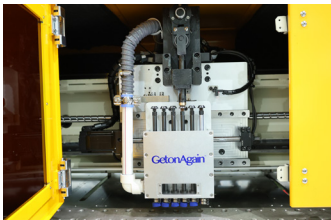
常规型号 Models

产品型号 Models	系列 Series	机头数量 Head No.	冲刀数量/头 Puncher No./head	占地面积 Installation Area (L×W×H)
GOA-AP	P(900×600)	1	6	1800mm×2010mm×1450mm
GOA-AP	P(900×600)	2	6	3130mm×2010mm×1450mm
GOA-AP	P(1200×800)	1	6	2100mm×2360mm×1450mm
GOA-AP	P(1200×800)	2	6	4030mm×2360mm×1450mm

参数说明 Parameters

花样读取方式: Pattern Reading:	U盘 USB	最高速度 (孔/分钟/头): Max. Speed (holes/minute/head):	单层冲最高2000孔/分钟/头, 三层冲最高1500孔/分钟/头 Single-layer reaches a max of 2,000 holes per minute per head; three-layer up to 1,500 holes per minute per head.	
夹料方式: Material Fixing:	垫板式 Plate Mount	最高储存容量: Max. Storage:	8G	气压: Air Pressure: 0.6MPa
最大功率: Max. Power:	<6Kw	电源: Power Supply:	三相380V 3-phase 380V	操作屏: Control Panel: 15-inch Industrial control panel
冲孔刀号: Puncher Size:	圆型 Circular (0.8mm、1.0mm、1.2mm、1.5mm、2.0mm、2.5mm) 正方形 Square (1×1mm、1.1×1.1mm、1.3×1.3mm、1.4×1.4mm、1.5×1.5mm、1.6×1.6mm、2.0×2.0mm) 长方形 Rectangle (2.1×1.2mm、1.1×1.9mm) 菱形 Diamond (1.4×1.4mm、1.6×1.6mm)			

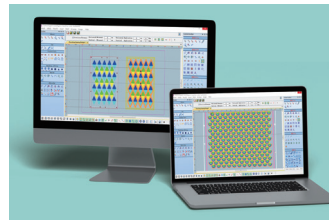
主要配置 Main Configuration



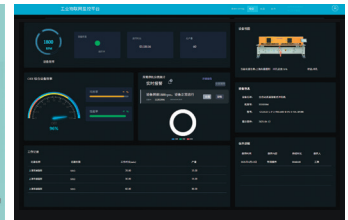
固定头重型冲孔6冲刀
Fixed heavy-duty head
with 6 sizes of puncher



15寸中控屏幕
15-inch touchscreen
computer control



选配: 再登高智能冲绣缝CAD系统
Optional: GetonAgain SewPerEmb CAD



选配: 智能物联网系统
Optional: GOATS-IIoT System.

天津再登高智能制造有限公司

地址: 天津宝坻经济开发区天宝南环路3号B楼-2号
邮箱: sales@raiseagaintech.com
网址: www.raiseagaintech.cn

400-166-8581

Tianjin RaiseAgain SM CO., Ltd.

Address: No.2,Block B-3, Tianbao Nanhuan Road, Baodi Economic
Development Area, Tianjin, China. **0086-22-6035 9933**
Email: sales@raiseagaintech.com www.raiseagaintech.com